

The background features a vertical gradient from light green at the top to light blue at the bottom. Numerous water droplets of various sizes are scattered across the surface, with a higher concentration in the top-left and bottom-right corners. The droplets have realistic highlights and shadows, giving them a three-dimensional appearance.

Writing Tasks For Y3

Story writing:

The palace in the woods

Who is the girl in the picture?

Why is she there?

Describe the palace.

Who lives in the palace?

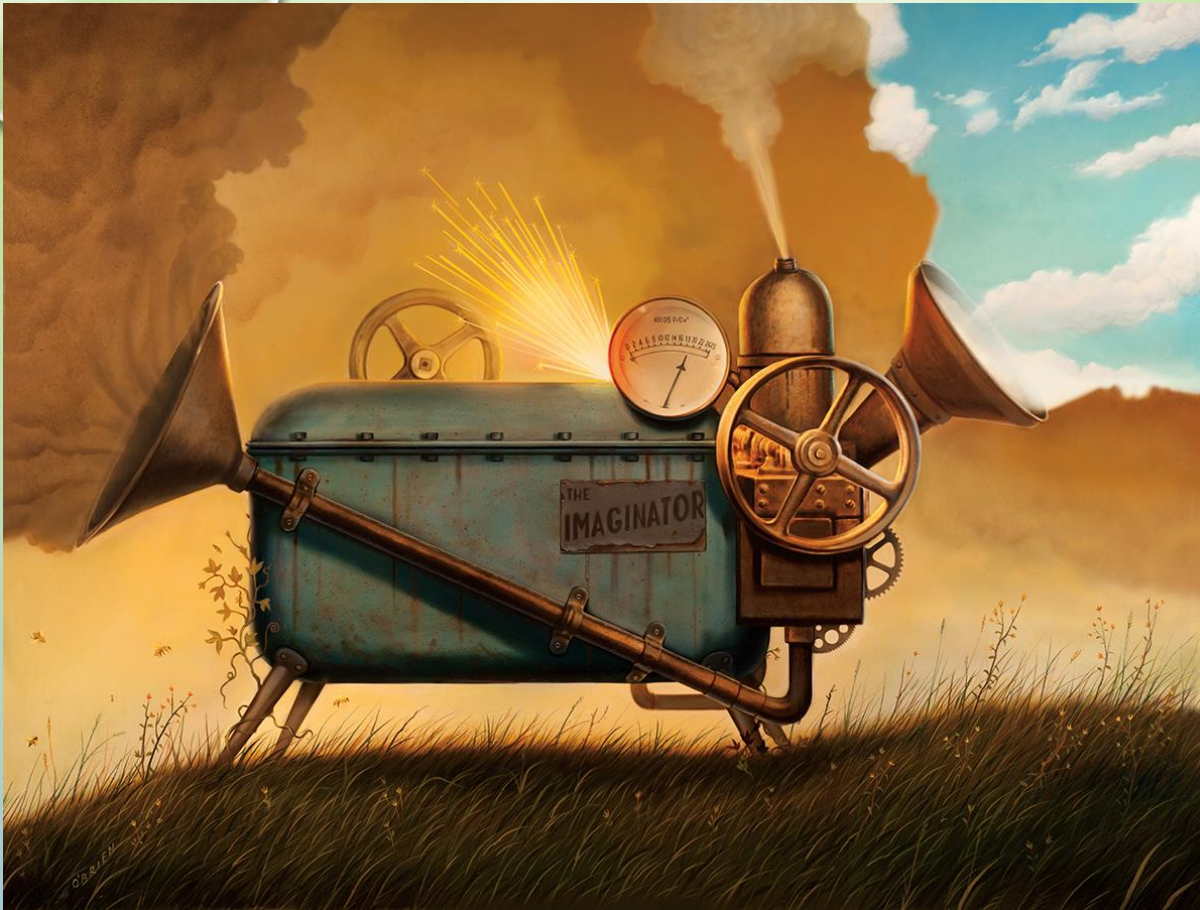
What happens next ..





You live in this city...

Write a letter to a friend describing the city and explain all the amazing things you can do. Try persuading them to come and visit you.



Explain how this machine works... What goes in and what comes out? Why are there sparks? How is it powered?

Describe the picture.

Now imagine climbing the ladder and walking through the door...

What is on the other side?



Write a newspaper report about this

What has happened?

What might eyewitnesses tell you they saw?

What do the people on the street think?

