

Thursday 31st March 2022



to Year 2 Remote Learning

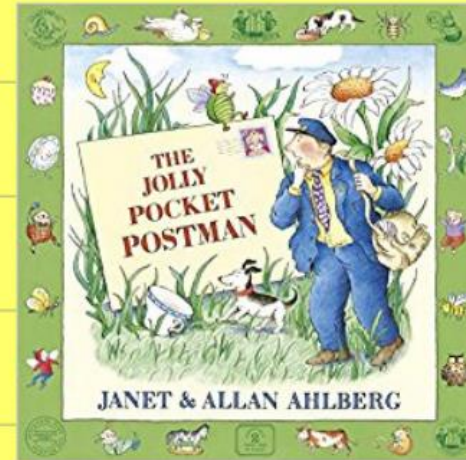
Literacy

9:00 – 10:15

Thursday 31st March 2022

I can write a letter.

Let's finish reading the story.



How does the Jolly Postman
feel at the end?



[The Jolly Postman or Other People's Letters - YouTube](#)

Thursday 31st March 2022

I can write a letter.

After his hard week, the postman needs some fun.

What activity would you like to invite the postman to?

Where will you go?

When will you go?

What time will it be?

How long will it last?

What will you do there?



Thursday 31st March 2022

I can write a letter.



What is the first feature we need to start our letter with?



How do we begin writing?

Thursday 31st March 2022

I can write a letter.

The Jolly Postman,

12 Letters Lane,

Postville

PO6 4QB

What is the first feature we
need to start our letter with?

Dear _____,

How do we begin writing?

Thursday 31st March 2022

I can write a letter.

It looks like you've had a hard week. Is your head feeling better after the bump from the large, heavy rattle that fell from the sky? Maybe you need a rest. I'm going trampolining on Saturday 21st March at 2pm. Would you like to come too? It'll be at Space Jump in Birmingham. You must meet me outside at 1pm if you want to come and you must wear some sports clothes. We can have dinner afterwards because we'll be hungry after all that jumping. What do you like to eat? Please reply or I won't know if you're coming. I can't wait to see you. What a fun time we'll have!

What features can you see?

Thursday 31st March 2022

Write a letter to the postman including the below features.

I can write a letter.

Where will you go?

What date is it on?

What time? start and end

What will you do there?

What do you need to bring?

suffix words

contractions



You should include:



letter features



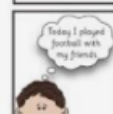
conjunctions



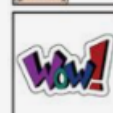
questions



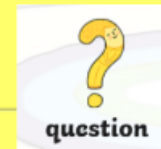
exclamations



commands

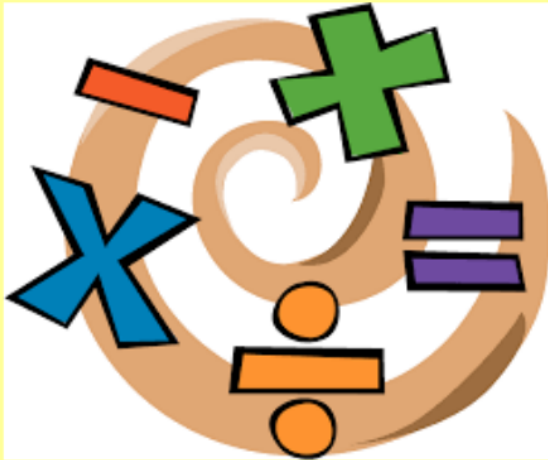


noun phrases



Maths

10:45 – 11:45



3 0 3 2 2

I can solve arithmetic questions.

MATHS

10:45 - 11:45

Addition



Subtraction



Multiplication



Division



What do you know about these four operations?

What does each symbol mean?



Addition	
Subtraction	
Multiplication	
Division	

Check your answers



MATHS

10:45 - 11:45

3 0 . 3 . 2 2

I can solve arithmetic questions.

1. $16 + 8 =$

2. $19 - 5 =$

3. $\underline{\quad} = 20 - 2$

MATHS

10:45 - 11:45

3 0 . 3 . 2 2

I can solve arithmetic questions.

4. $6 + \underline{\quad} = 16$

5. $\frac{1}{3}$ of 18 =

6. $30 + \underline{\quad} = 100$



Addition



Subtraction



Multiplication



Division



Check your answers



MATHS

10:45 - 11:45

3 0 . 3 . 2 2

I can solve arithmetic questions.

7. $10 \times 2 =$

8. $2 \div 2 =$

9. $\frac{1}{2}$ of 16 =



Addition



Subtraction



Multiplication



Division



Check your answers



MATHS

10:45 - 11:45

3 0 . 3 . 2 2

I can solve arithmetic questions.

1 0. $27 + 45 =$

1 1. $62 - 25 =$

1 2. $43 - 25 =$



Addition



Subtraction



Multiplication



Division



Check your answers



MATHS

10:45 - 11:45

3 0 . 3 . 2 2

I can solve arithmetic questions.

1 3. $33 + 12 = 100 - \underline{\hspace{2cm}}$

1 4. $\frac{1}{4}$ of 16 =

1 5. $\frac{3}{4}$ of 24 =



Addition



Subtraction



Multiplication



Division



Check your answers



3 0 . 3 . 2 2

Your turn

MATHS

10:45 - 11:45

I can solve arithmetic questions.

READ the questions carefully.



Addition	+
Subtraction	-
Multiplication	x
Division	÷

THINK about what it is asking you to do

Work out and **CHECK** your answers.

Check your answers



$5 \div 5 =$

Use the space to work out your answer and write your final answer in the box.

1

$$\boxed{} + 9 = 13$$



1 mark

3

$$76 + 10 = \boxed{}$$



1 mark

2

$$17 - 6 = \boxed{}$$



1 mark

4

$$15 - 7 = \boxed{}$$



1 mark

5

$$22 + \boxed{} + 2 = 26$$



1 mark

7

$$5 + 3 = \boxed{}$$



1 mark

6

$$43 - 4 = \boxed{}$$



1 mark

8

$$62 + 9 = \boxed{}$$



1 mark

9

$9 + 3 + 4 = \boxed{}$



1 mark

11

$59 - 30 = \boxed{}$



1 mark

10

$25 + 17 = \boxed{}$



1 mark

12

$70 - 50 = \boxed{}$



1 mark

13

$10 \times 6 =$



1 mark

15

$4 \times 3 =$



1 mark

14

$7 \times 2 =$



1 mark

16

$18 \div 2 =$



1 mark

17

$$\boxed{} \div 5 = 8$$



1 mark

19

$$52 + 29 = \boxed{}$$



1 mark

18

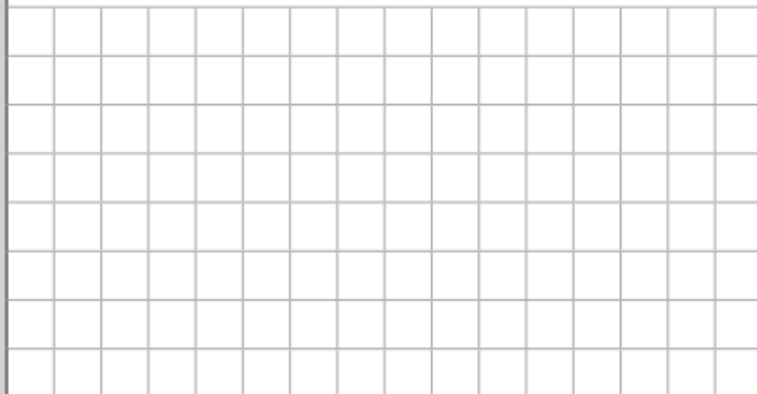
$$\frac{1}{4} \text{ of } 24 = \boxed{}$$



1 mark

20

$$94 - 62 = \boxed{}$$



1 mark

21

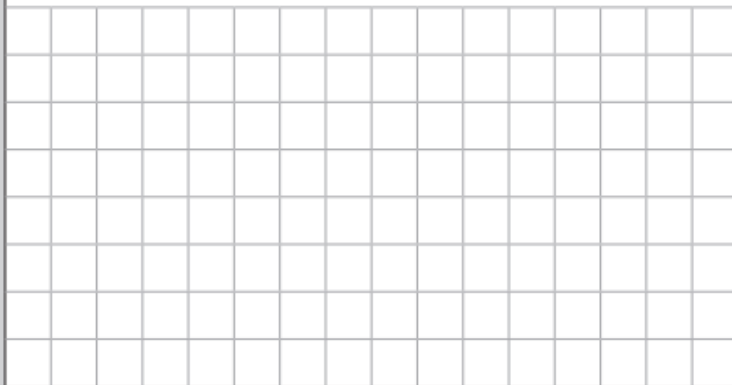
$$\frac{1}{2} \text{ of } 16 = \boxed{}$$



1 mark

23

$$46 + 35 = \boxed{}$$



1 mark

22

$$60 - \boxed{} = 23$$



1 mark

24

$$\frac{1}{3} \text{ of } 18 = \boxed{}$$



1 mark

25

$\frac{3}{4}$ of 52 =



1 mark

Handwriting

Wednesday 30th March 2022

j

u

ju

ju

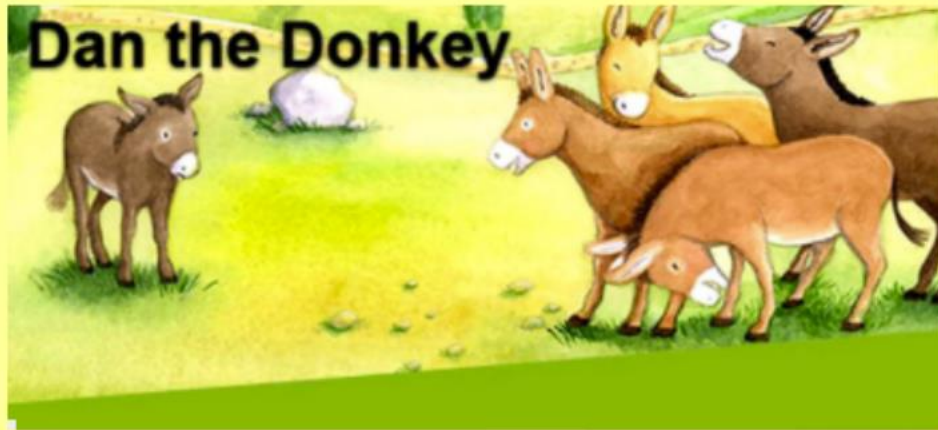
RE

2:00 - 2:30



30.3.22

I understand Palm Sunday.



Why is this date important to Christians?

What happened?

Click on the link to watch the story.

[Palm Sunday - 'Dan the Donkey' - BBC Teach](#)

30.3.22

I understand Palm Sunday.



Draw pictures and
write sentences to retell
the story.
