

Friday 18th March 2022

Key



= spelling mistake



= error



= great sentence



= not edited




=LO link (adjectives)

1 8.0 3.2 2

I can find a quarter

<https://vimeo.com/513814593>

Find a quarter

- 1 Here are 8 counters. 

a) Share the counters equally into 4 groups.



b) Complete the sentences.

counters are shared equally

between groups.

There are counters in each group.

c) What is $\frac{1}{4}$ of 8?

How did you work this out?

- 2 There are 12 pencils.

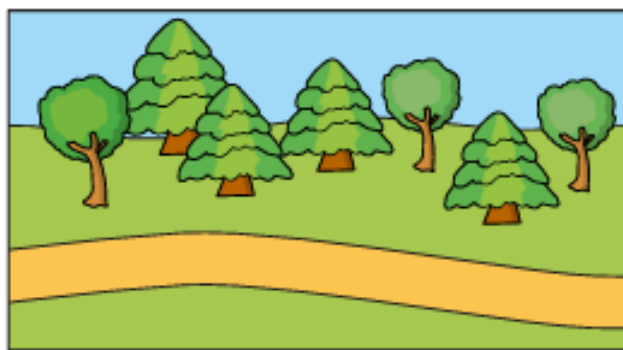


a) Share them equally between 4 pencil pots.



b) What is $\frac{1}{4}$ of 12?

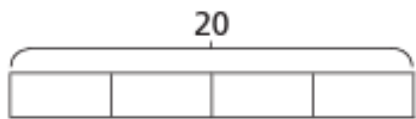
- 3 Tom and Dora are walking along a path. By midday Dora has walked halfway. Tom has walked a quarter of the way.



- a) Draw an arrow to show where Dora is.
b) Draw an arrow to show where Tom is.

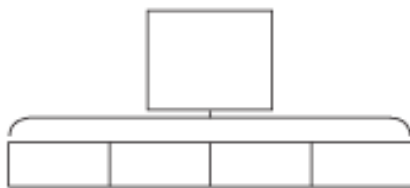
- 4 Use the bar models to help you work out a quarter.

a) Work out $\frac{1}{4}$ of 20



$\frac{1}{4}$ of 20 =

b) Work out $\frac{1}{4}$ of 16



$\frac{1}{4}$ of 16 =

- 5 Show that $\frac{1}{4}$ of 24 is 6



6



I can find a quarter by halving a number and halving again.

Use this method to find $\frac{1}{4}$ of 12



$\frac{1}{4}$ of 12 =

- 7 Complete the table.

Number	$\frac{1}{2}$ of Number	$\frac{1}{4}$ of Number
8		
20		
24		

- 8 $\frac{1}{4}$ of a number is 7

What is the number?



The number is



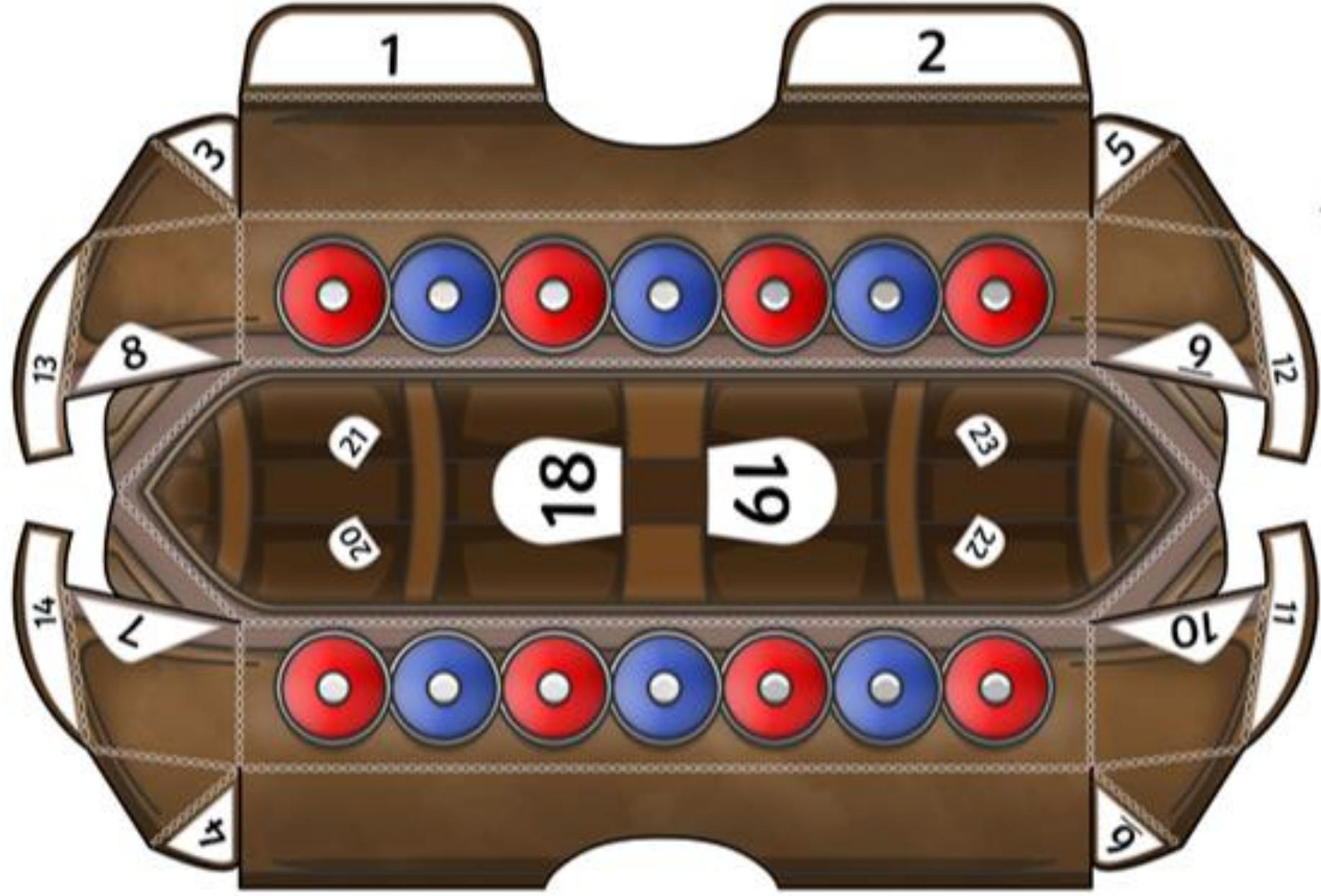
Friday 18th March 2022

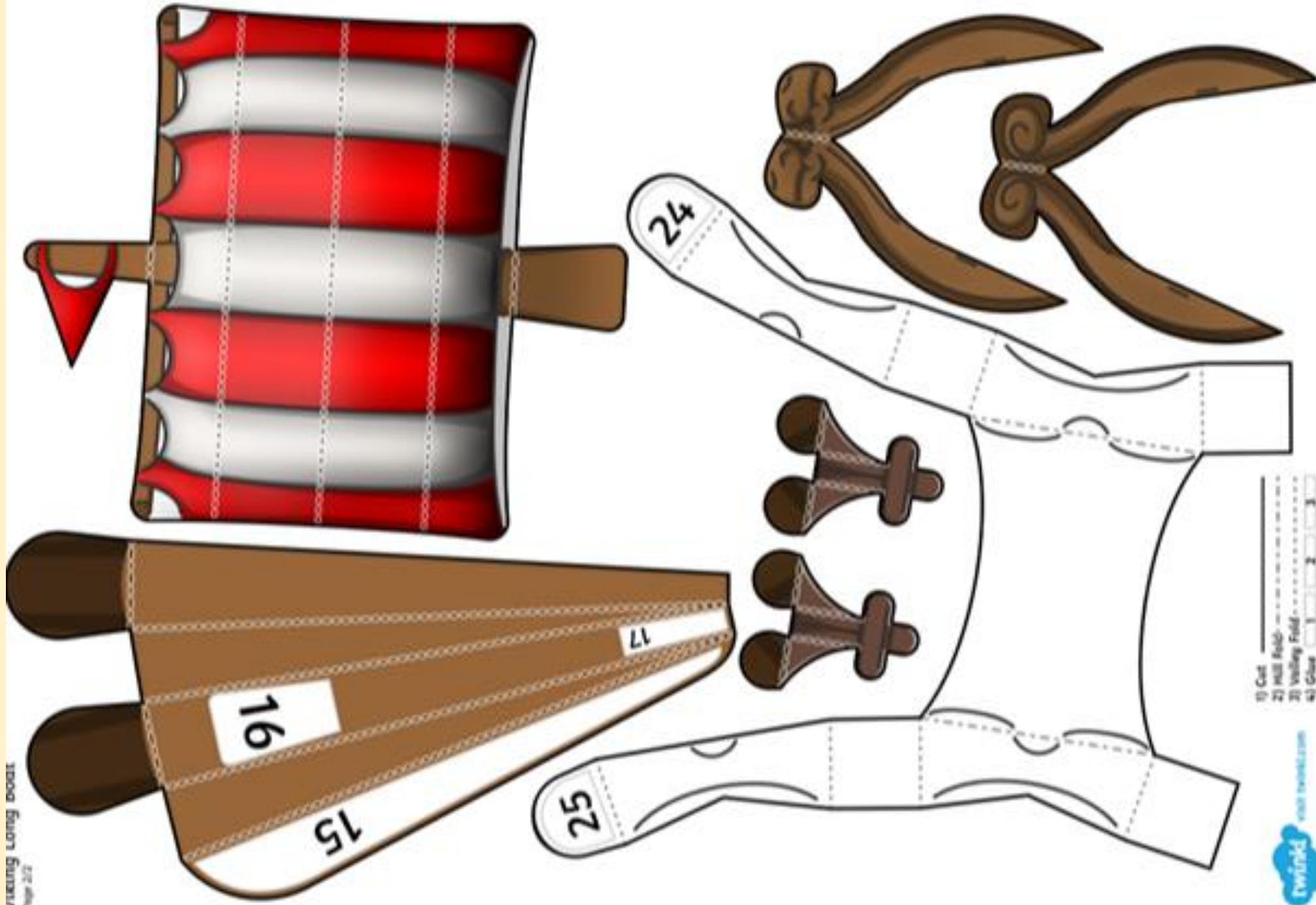
I can make a viking longship.

[Viking longships - 1st level People, past events and societies - BBC Bitesize](#)



What is a
viking
longship?





Viking Long Boat Paper Model Instructions

1) Carefully cut out the parts of the model along the solid black outline.

2) Fold along the dotted lines.

- 1) Cut _____
- 2) Hill Fold - - - - -
- 3) Valley Fold - - - - -
- 4) Glue 1 2 3



3) Glue tabs 1 and 2 to the other side of the boat.

4) Glue tabs 3-10 and then glue the front and back ends of the boat together.

5) Fold over the 2 scissor shaped sections, gluing them to tabs 11-14.

6) Glue tab 15 to the other side of the mast.

7) Glue the sails to tabs 16 and 17.

8) Glue the mast to tabs 18 and 19.

9) Glue the 2 T shaped sections to tabs 20-23 to complete the boat.

10) Create the optional display base by gluing tabs 24 and 25 to the other side of the base.

