

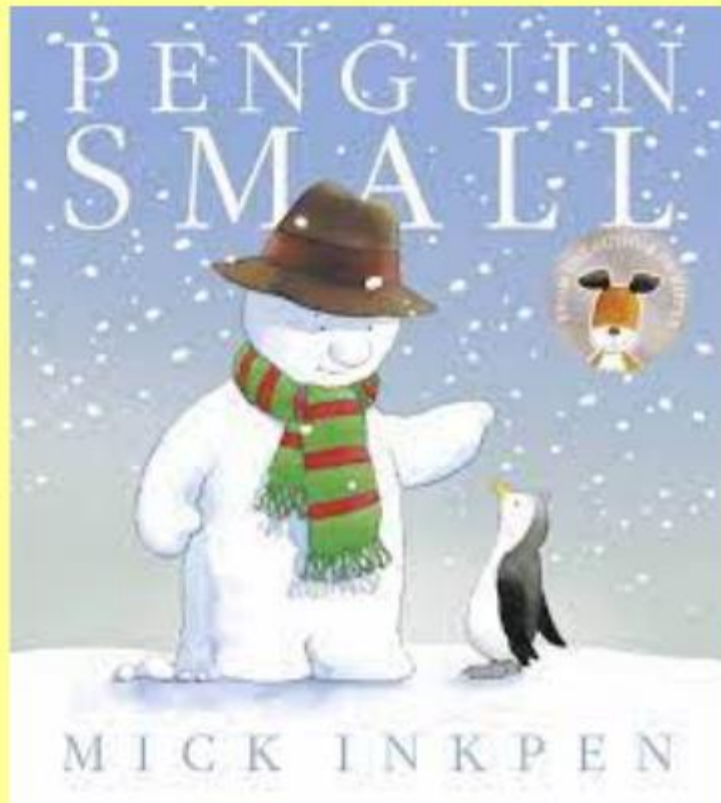
Monday 24th January 2022



Year 2 Remote Learning

# Literacy

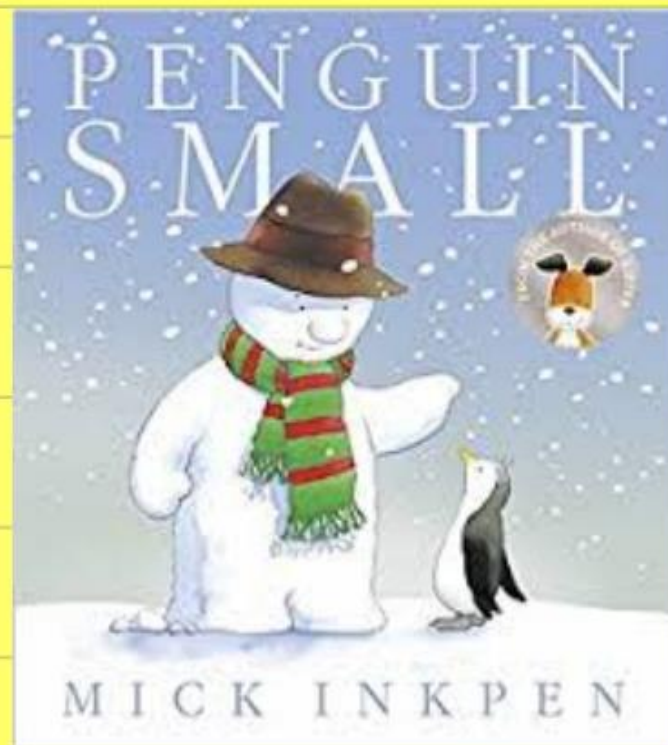
9:00 – 10:15



Monday 24th January 2022

I can predict a story. A44

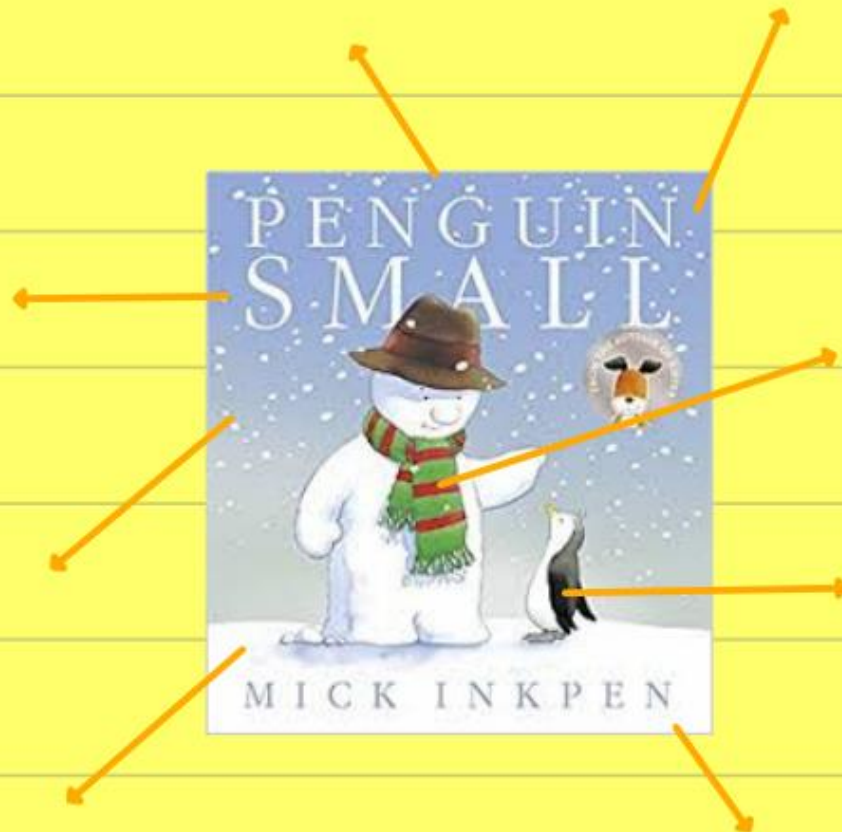
Looking only at the front cover, what do you think will happen?



Monday 24th January 2022

I can predict a story.

Write down some of your ideas as notes:



# Making Predictions

A good reader makes predictions as they read.

A prediction is an educated guess about what may happen in the story based on pictures or text.

## Before Reading

Make predictions using the title and illustrations in the book.

"Based on the title and pictures, I think..."



who?



what?



where?



when?



why?



how?



Monday 24th January 2022



I can predict a story.

Write a detailed prediction.

Use '**because**' to explain your prediction.

I predict that \_\_\_\_\_

---

---

---

---

---

# Monday 24th January 2022

## I can predict a story. A44



Write simple sentences starting with 'I think' and including 'because' to explain your ideas.



Write sentences explaining your prediction using 'because' and including noun phrases.



Use different sentence starters, noun phrases and conjunctions in your prediction.



Think about using noun phrases and other conjunctions as well as 'because' in your prediction.

2 4 . 1 . 2 2

MATHS

10:45 - 11:45

I can make equal groups by sharing.

Click on the link below to watch and learn.  
Then complete the worksheet on the next slide.



<https://vimeo.com/492603633>

- 1 Annie has 12 apples.



She shares them equally into 2 boxes.

Show how Annie shares the apples equally.

Complete the sentences.

There are 12 apples.

There are  boxes.

There are  apples in each box.

- 2 Take 20 cubes.

- a) Share them into 2 equal groups.  
Complete the sentences.

There are 20 cubes.

There are  groups.

There are  cubes in each group.

- b) Share the cubes into 5 equal groups.  
Complete the sentences.

There are 20 cubes.

There are  groups.

There are  cubes in each group.

- c) You can share 20 into other equal groups.

Is this true?

How do you know?

- 3 Work out the divisions.

Use base 10 to help you.



- a)  $40 \div 2$     b)  $40 \div 4$     c)  $40 \div 5$     d)  $40 \div 10$

Did you have to make any exchanges?

- 4 30 flowers are shared equally between 5 vases.



- a) Complete the division.

$$\boxed{\phantom{00}} \div \boxed{\phantom{00}} = \boxed{\phantom{00}}$$

## Make equal groups – sharing

- b) Share the cubes into 5 equal groups.  
Complete the sentences.

There are 20 cubes.

There are  groups.

There are  cubes in each group.

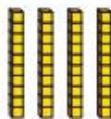
- c) You can share 20 into other equal groups.

Is this true?

How do you know?

- 3 Work out the divisions.

Use base 10 to help you.



- a)  $40 \div 2$     b)  $40 \div 4$     c)  $40 \div 5$     d)  $40 \div 10$

Did you have to make any exchanges?

- 4 30 flowers are shared equally between 5 vases.



- a) Complete the division.

$$\boxed{\phantom{00}} \div \boxed{\phantom{00}} = \boxed{\phantom{00}}$$

- b) What does each part of the division represent?

Talk about it with a partner.

- 5 Complete the divisions.

A  $20 \div 5 = \boxed{\phantom{00}}$

C  $20 \div \boxed{\phantom{00}} = 2$

B  $20 \div 4 = \boxed{\phantom{00}}$

D  $20 \div 2 = \boxed{\phantom{00}}$

Write a letter in each box to match the divisions to the sentences.

Dora has 20 apples. She shares them equally between 4 boxes.

Ron has 20 sweets. He shares them equally between some party bags. There are 2 sweets in each party bag.

Dexter has 20 toy cars. He shares them equally between 5 boxes.

Whitney has 20 dolls. She shares them equally with her sister.

What other sentences can you think of to match the divisions?



Handwriting

Monday 24th January 2022

t

t

tu

tu

24.1.22

I can locate Australia



© oxford designers & illustrators 2004

Where is Australia?

24.1.22

I can locate Australia.



What continent is Australia in?

<https://www.youtube.com/watch?v=K6DSMZ8b3LE>

Click the link to listen to the 7 continents song.

24.1.22

I can locate Australia.



What is the capital city of Australia?

24.1.22

I can locate Australia.

## Where in the World?

### United Kingdom

The United Kingdom is made up of England, Scotland, Wales and Northern Ireland. It is in the Atlantic Ocean.

### Australia

Australia is a country and a continent surrounded by the Indian and Pacific Oceans.



# Australia



Australia is the world's sixth largest country.

Around 24 million people live in Australia, which is not that many considering how large it is! By comparison, 65 million people live in the United Kingdom.

However, you could fit the United Kingdom into Australia 22 times!

What do you want to know about Australia?

24.1.22

I can locate Australia.

Find and colour Australia on the world map.

## World Map



Where is Australia?  
Where is the United Kingdom?

Talk about what you notice about the two countries.

# World Map

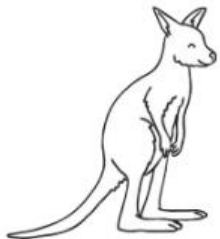


24.1.22

I can locate Australia.

Look at the map of Atsutalia on the previous slides. Divide this map into the different territories and label the cities.

**Map of Australia**



What are the different territories?

Label the major cities.

What is the capital city?

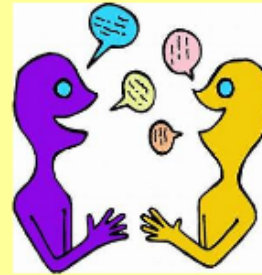
# Map of Australia



24.1.22

I can locate Australia.

What have you learned today?



Australia is smaller than the UK.

Australia is part of the continent of Europe.

The capital city of Australia is Canberra.

Queensland is an area (territory) of Australia.

