

Tuesday 18th January 2022

HANDWRITING

mineral

whereabouts

aggressive

affectionate

abundance

WORD OF
THE DAY:

emerge

Write each word 3 times
in your handwriting book
followed by a sentence
which uses the word.

Tuesday 18th January 2022

Literacy

I can compare two characters.

Today, we are learning...

How to make predictions based on what we have read.

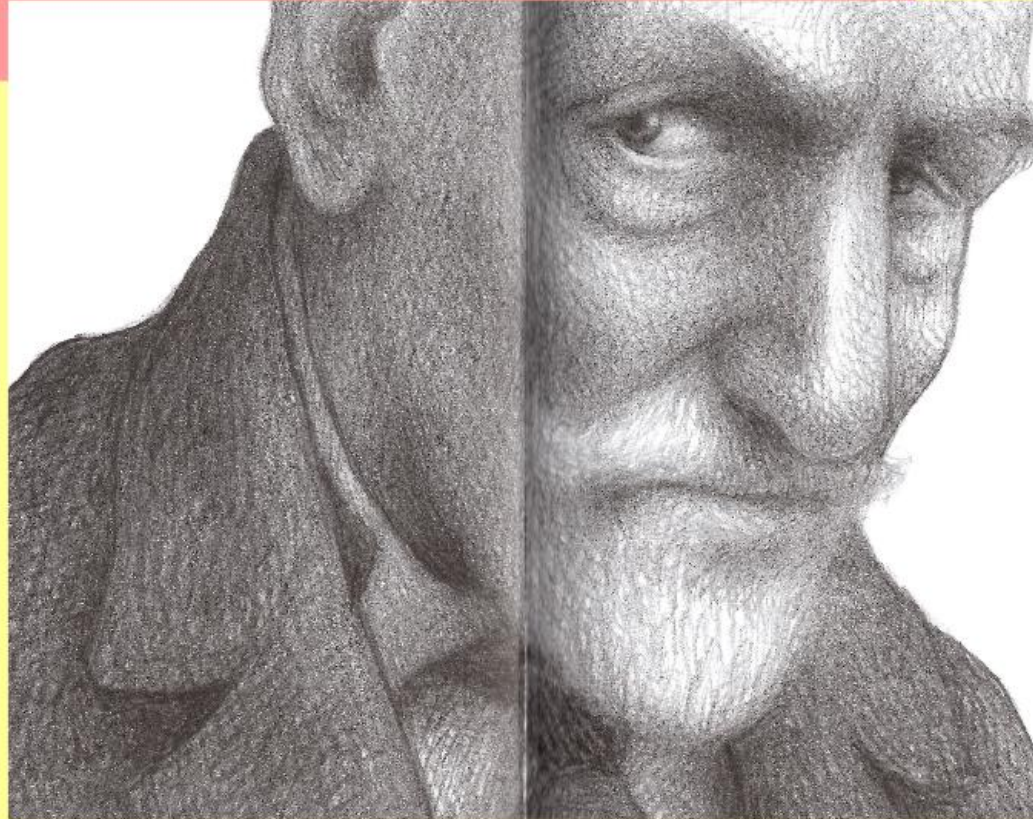
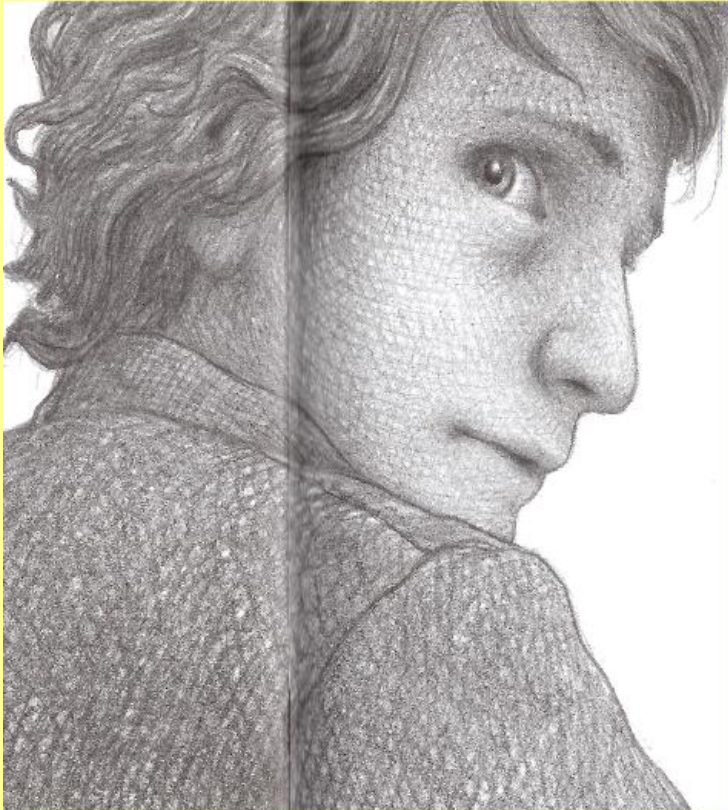
How to explain our decisions using evidence from the text.

The difference between physical traits and personality traits.

Tuesday 18th January 2022

I can compare two characters.

What can you tell me about these two characters?

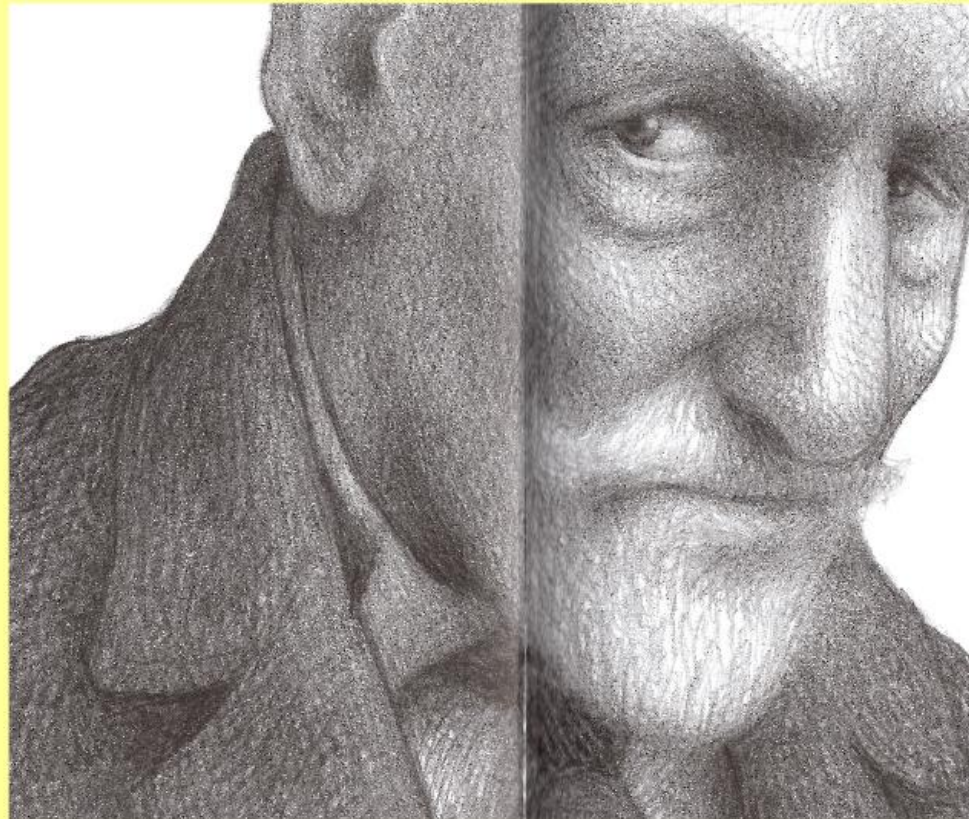
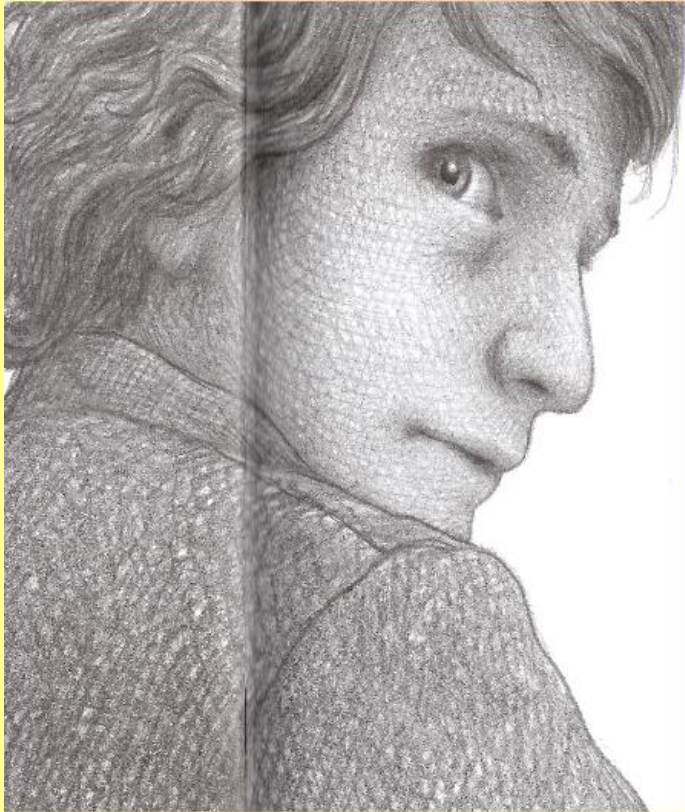


Physical description

Tuesday 18th January 2022

I can compare two characters.

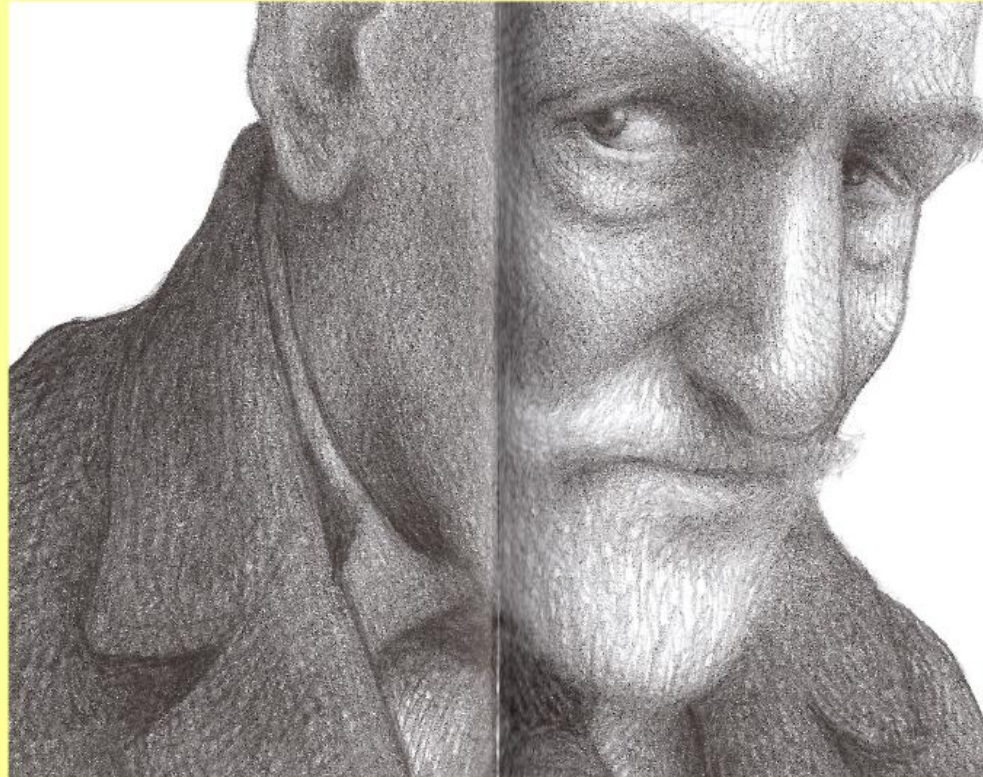
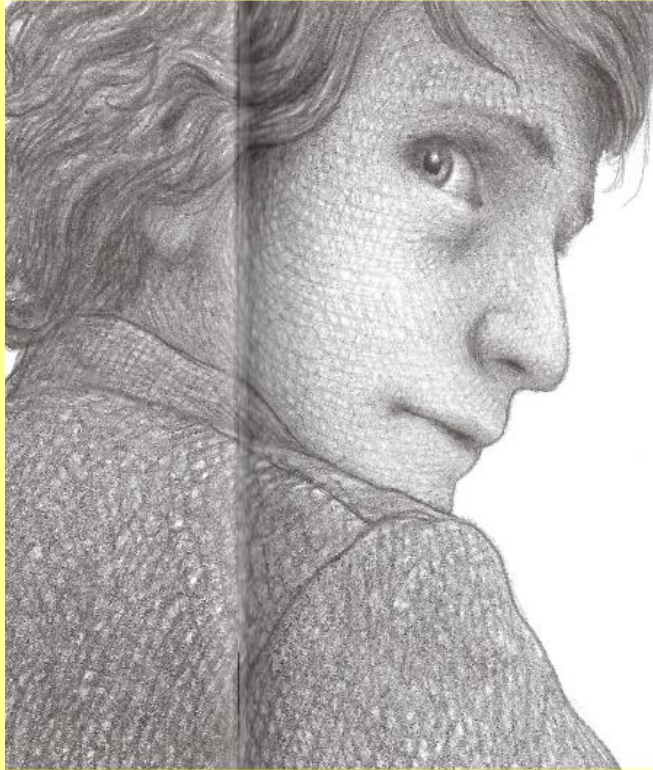
What can you tell me about their personalities from the images?



Tuesday 18th January 2022

I can compare two characters.

Let's pick one of the characters to describe...



Tuesday 18th January 2022

I can compare two characters.

Let's make some decisions about them.

What is their personality like?

How are they feeling?

Okay, let's go...!

Now, it's your turn...

YOUR TASK:

Which of the personality traits below would you ascribe to Hugo and the old man. Explain your decisions.

a) aggressive b) lonely c) despondent

Year 6 Maths

Week 2 – Decimals

Lesson 2 – I can use division to solve problems.

Video to support the task can be found here:

<https://vimeo.com/490691239>

The worksheet for the lesson can be found below.

Division to solve problems

- 1 There are 1,360 children in a school.
A quarter of the children walk to school.
How many children walk to school?

- 2 Huan has saved his pocket money for 5 weeks.
He gets the same pocket money every week.
He has saved £16.65
How much pocket money does Huan get each week?



- 3 Tom is running a 6-kilometre race.
He has run one-third of the race so far.
How many more kilometres does Tom have left to run?



- 4 Dora, Ron and Teddy are making paper chains.



Dora

My paper chain
is 1.1 m long.



Ron

Dora's paper chain
is twice as long
as mine.



Teddy

My paper chain
is three times longer
than Ron's.

- a) How long is Ron's paper chain?

- b) How long is Teddy's paper chain?

- 5 A water bottle holds 2 litres.
A leak in the bottle means 25 ml drips out each day.
How many days will it take until the bottle is empty?

 days

- 6 a) A school bus can hold 30 people.
There are 726 children going on a school trip.
How many buses are needed?



- b) A cake needs 4 eggs.
How many cakes can be made from 345 eggs?



- 7 Shop A sells 5 tins of paint for £23.40
Shop B sells 3 tins of the same paint for £14.01



Which shop should Aisha buy her paint from? _____
Explain your reasoning.

- 8 $146 \div 5 = 29$ remainder 1
 $117 \div 4 = 29$ remainder 1



This means that
 $117 \div 4 = 146 \div 5$

Do you agree with Whitney? _____
Explain your thinking.

- 9 I'm thinking of a 3-digit number.
When I divide it by 5, I am left with a remainder of 3
When I divide it by 10, I am left with a remainder of 8
It rounds to 200 to the nearest 100
It has one hundred.
What could my number be?

Create your own problem like this for a partner.

Tuesday 18th January 2022

PSHE

I can understand that anyone can suffer from mental health issues and that these can be resolved with support.

We've discussed mental health before.

What is it?

What can we do when we are finding things difficult? <https://mindedforfamilies.org.uk/>

School - talk to a member of staff. Home - talk to an adult you trust.

childline

ONLINE, ON THE PHONE, ANYTIME

Call 0800 1111  About us 

Info and advice 

Get support 

Toolbox 

Get involved 

Your locker 

Sign in

NEED TO TALK?



Get support

We're here for you on the phone or online. Or try getting support from other young people on our message boards.



Contacting Childline

Call us free on 0800 1111 or find out how to get in touch online. Whatever your worry, we're here for you.



Message boards

Share your experiences, have fun and get support from other young people in similar situations.



About Childline

Find out who we are, what we do - and how we can help you.

Tuesday 18th January 2022

I can understand that anyone can suffer from mental health issues and that these can be resolved with support.

Your task...

Create a poster explaining to a younger person where they would be able to find help if they were struggling with their mental health.

Tuesday 18th January 2022

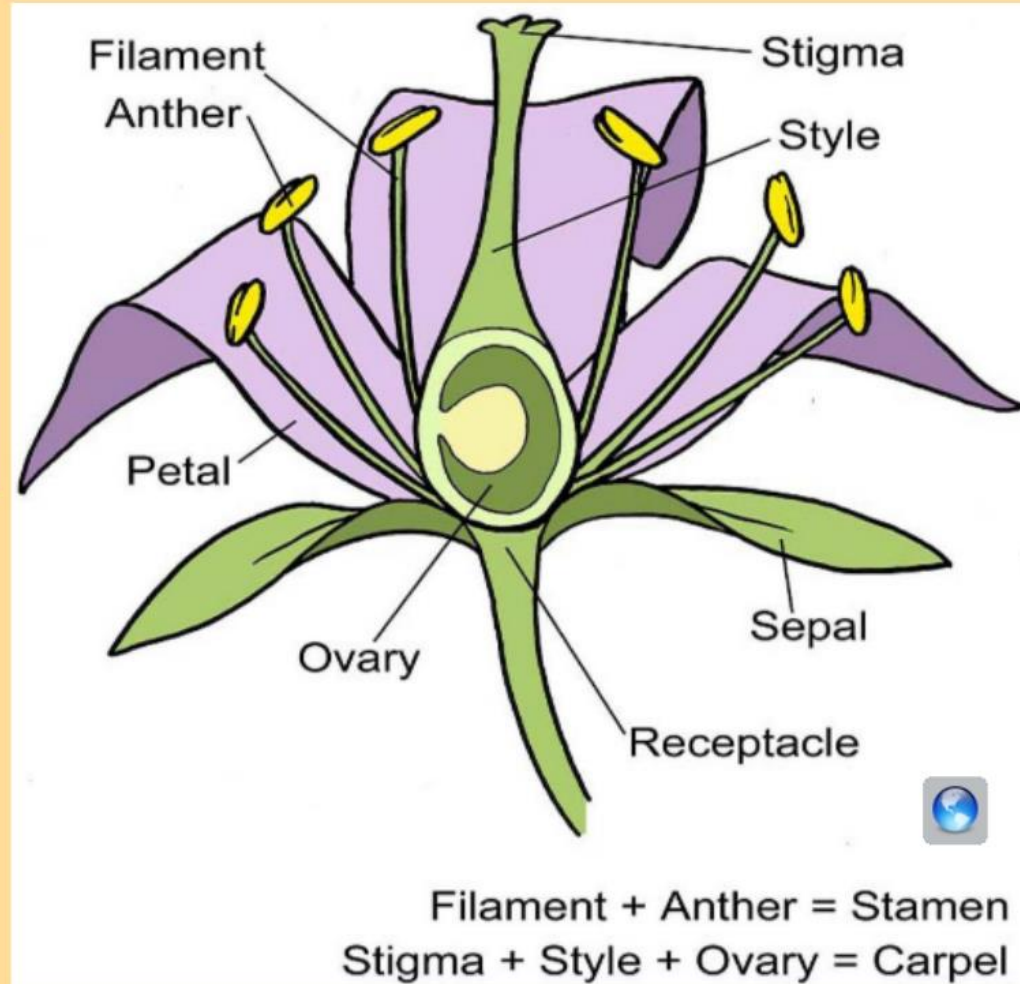
Science

I can describe the process of reproduction in plants.

Tell me about the parts of a flower and their function.

How is a seed produced?

Why is a seed produced?



Vocabulary:

flower,
petals,
stamen,
anther,
pollen,
pollination,
filament,
carpel,
stigma,
style,
ovaries,
ovules,
fertilisation.

<https://www.bbc.co.uk/bitesize/topics/zxfrwmn/articles/zfn6t39>

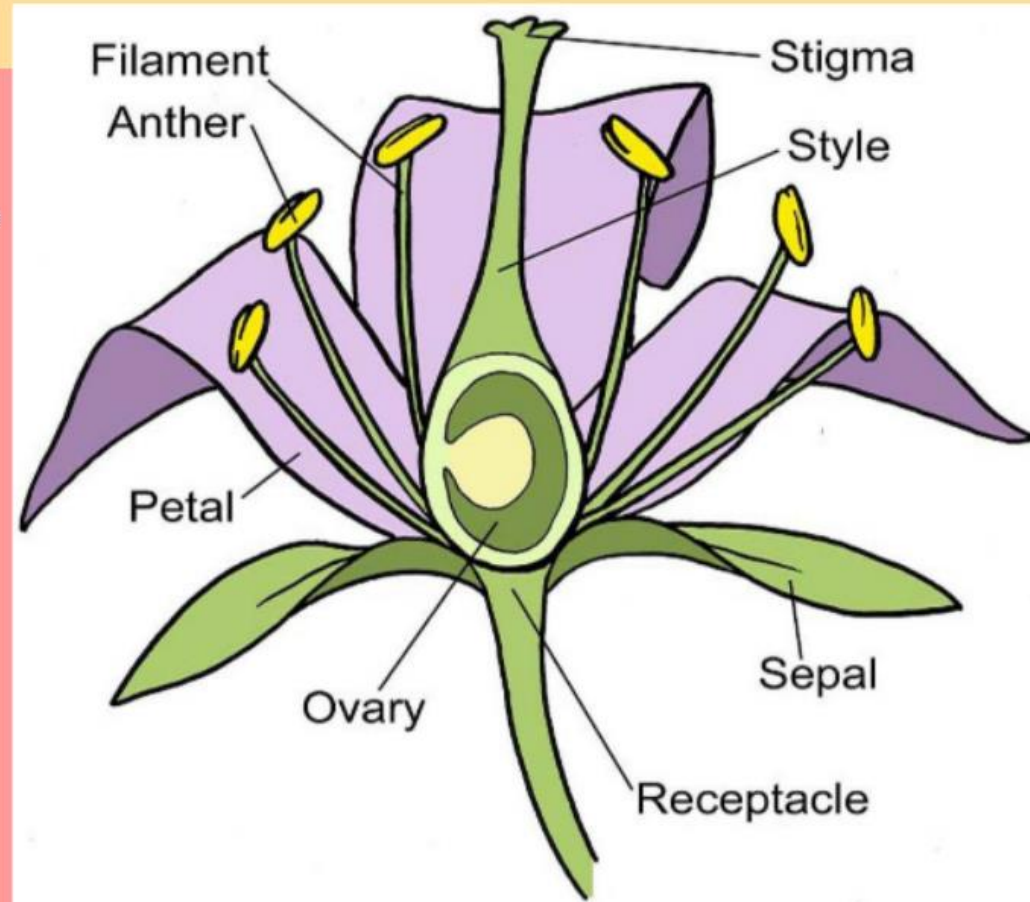
Tuesday 18th January 2022

I can describe the process of reproduction in plants.

Your task is to draw a diagram of a flower and label the parts.

Explain how a flower produces a seed.

Can you find out how a *spider plant* reproduces?



Filament + Anther = Stamen

Stigma + Style + Ovary = Carpel

Vocabulary:

flower,
petals,
stamen,
anther,
pollen,
pollination,
filament,
carpel,
stigma,
style,
ovaries,
ovules,
fertilisation.