

Tuesday 11th January 2022

11-1-22

Write each word three times.

After each word has been written, put it into a sentence that shows its meaning.

Word of the Day = **self-evident**.

accompany

What does it mean?

community

Does it have more than one meaning?

opportunity

profession

Which word type is it?

critic

How do we use it?

Tuesday 11th January 2022

11-1-22

I can punctuate dialogue between characters.

Think about when have you seen dialogue in a text.

What do you think the dialogue has been used to do?

Tuesday 11th January 2022

11-1-22

I can punctuate dialogue between
characters.

Look at the next slides to see how
authors use speech...



It is usually
between two or
more people...



...and it can be
really useful
when describing
characters or
advancing a
story's

When writing dialogue, it's



"We've gone the wrong way... again,"



"No we haven't!" shouted Beryl over the buzz of hundreds of pairs of beating wings. "Queen Betty knows the way and, anyway, I'm sure that we've not seen this patch of flowers before."



"It's not haunted,"

"I don't like it," said James, "it's giving me a weird feeling."

"It's fine, there's nothing he..."



[Redacted]

“Rosie? What is it? What can you see?”

Rosie was shaking and pointing to a space just in front of her. “There... there...there’s...a...”

“What? Where? Rosie, there’s nothing there. You’re pointing at an empty space. Stop it, please; you’re scaring me,”

[Redacted]

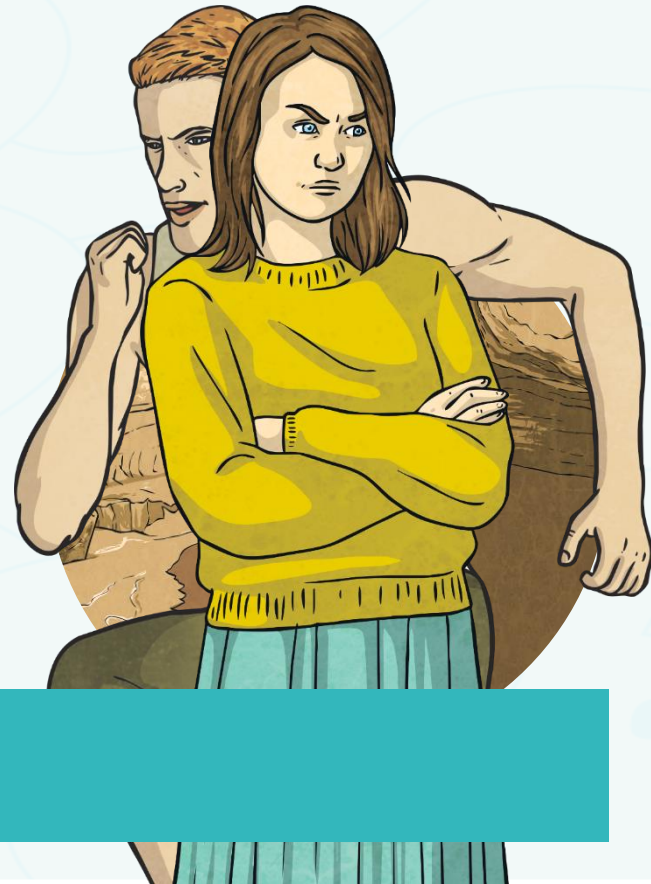


Joyce looked behind her at the crumbling walls. "We're not the only ones in here."

"Joyce, run!" Rob screamed, "I can see the cave starting to collapse!"

"We're not going to make it!" Joyce panicked. "There's not enough time to get out!"

"We've got to try. If we don't, we'll be trapped in here for sure."



"Good day sir," said an older gentleman while waiting for the bus. "What fine weather we appear to be having."

"You what?" exclaimed a second man, who also happened to be waiting. "What is you on about? It's well ' ain't likin' it."

"I do beg your pardon; it's

I rather enjoy these rare moments of bliss, riding upon fine transport and sheltering beneath this charming infrastructure."

"Fine transport? You mean a bus? What's fine 'bout a bus? If I could, I would spend all day on one of ' . Now, that's fine transport!"





Use your characters'



Tuesday 11th January 2022

11-1-22

I can punctuate dialogue between
characters.

How do we punctuate speech?

Tuesday 11th January 2022

11-1-22

I can punctuate dialogue between characters.

Your task...
Use the image to
write a dialogue
between two
superheroes who are
battling across the
streets of a city.



Reported Speech vs. Direct Speech



Reported Speech vs. Direct Speech

Inverted Commas

In British English, a single inverted comma may be used:

‘Get off my bridge.’

However a double inverted comma may also be used:

“Get off my bridge.”

Whichever style you choose, use it consistently across a text.

Punctuation Inside Inverted Commas

All commas, full stops, question marks and exclamation marks must also be enclosed by inverted commas.

For example:

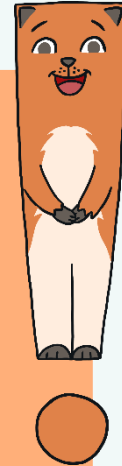
‘That grass looks delicious,’ said the smallest Billy Goat Gruff.

‘Hey, goat!’ shouted the troll.

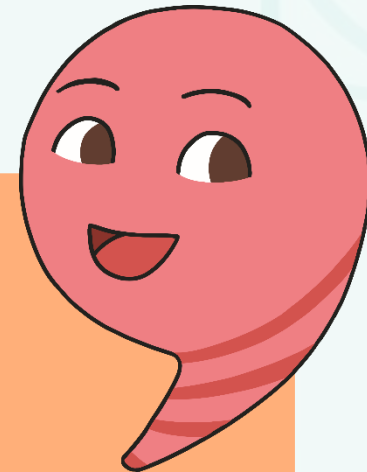
‘You are not allowed to cross my bridge.’

‘How can we get to the other side?’ asked the Biggest Goat Gruff.

NOT: ‘Get off my bridge ’ shouted the troll.



Commas



'We need to get to the other side,'

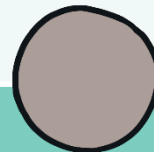
'Those goats are always disturbing my sleep,'

Commas

'Who goes there?'



'Who goes there?,'



Commas

, 'I'll go first.'

, 'Who goes there?'

, 'Oh no you won't!'

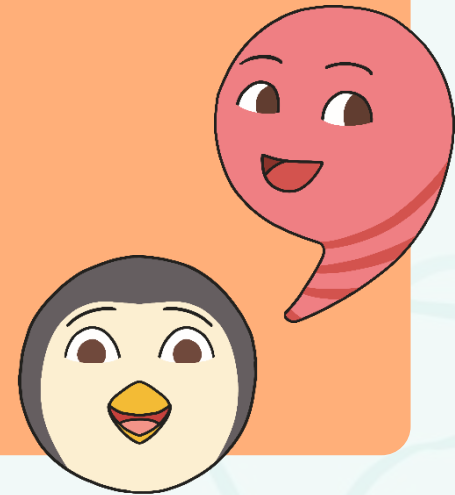


Punctuation Inside Inverted Commas

, 'I' ll go first.' ○

, 'Who goes there?' ○

, 'Oh no you won't!' ○



Punctuating 'Split' Direct Speech

'I'm light and quiet so I'll go first.'

For example:

'I'm light and quiet,' said the smallest Billy Goat Gruff, 'so I'll go first.'

Punctuating 'Split' Direct Speech

'I'm light and quiet,' said the smallest Billy Goat Gruff, 'so I'll go first.'

In this context, use a **lower case letter** to start the second part of the direct speech.

Punctuating 'Split' Direct Speech

'You're right. We can't let the Troll beat us.'

For example:

'You're right,' agreed the Biggest Billy Goat Gruff. 'We can't let the Troll beat us.'

Punctuating 'Split' Direct Speech

For example:

'You're right,' agreed the Biggest Billy Goat Gruff. 'We can't let the Troll beat us.'



New Speaker, New Line

If the direct speech in a text involves more than one speaker, a new line must be used for each new speaker. This helps the reader to follow what is being said.

For example:

‘We can’t let him win! He’s just a grumpy troll!’ said the smallest Billy Goat Gruff.

‘You’re right,’ agreed the biggest Billy Goat Gruff.

The medium-sized Billy Goat Gruff said, ‘So what shall we do?’

Reporting Clauses

'Who goes there?'

'That grass looks so green and delicious,'

Year Six Maths

Week 2 - Decimals

Lesson 2 - I can multiply numbers by 10, 100 and 1,000.

Videos to support the task can be found here.

<https://whiterosemaths.com/homelearning?year=year-6&term=spring>

The worksheets for the lesson can be found below.

Multiply by 10, 100 and 1,000

- 1 Complete the calculations and sentences.

Use place value counters to help you.

Th	H	T	O	Tth	Hth
			●●●●	●●●●	

a) $2.3 \times 10 =$

When the number is multiplied by 10 the counters move place to the left.

b) $2.3 \times 100 =$

When the number is multiplied by 100 the counters move places to the left.

c) $2.3 \times 1,000 =$

When the number is multiplied by 1,000 the counters move places to the left.

- 2 Complete the diagram.



- 3 a) Draw counters on the place value charts to represent each calculation.

4.4×1

Th	H	T	O	Tth	Hth
				●	

4.4×10

Th	H	T	O	Tth	Hth
				●	

4.4×100

Th	H	T	O	Tth	Hth
				●	

$4.4 \times 1,000$

Th	H	T	O	Tth	Hth
				●	

- b) Complete the calculations.

$4.4 \times 1 =$

$4.4 \times 10 =$

$4.4 \times 100 =$

$4.4 \times 1,000 =$

What do you notice?

4 Complete the calculations.

a) $13.44 \times 10 =$

d) $4.4 \times$ $= 4,400$

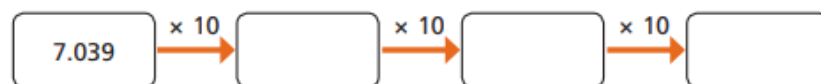
b) $41.4 \times 100 =$

e) $= 1.03 \times 100$

c) $0.415 \times 1,000 =$

f) $30.44 =$ $\times 10$

5 Complete the diagrams.



What do you notice? Why does this happen?



6 Write $>$, $<$ or $=$ to compare the number sentences.

$1.4 \times 10 \times 10 \times 10$ $1.4 \times 1,000$

$1.4 \times 10 \times 100$ $1.4 \times 1,000$

$1.4 \times 10 \times 10$ $1.4 \times 1,000$

$1.4 \times 10 \times 2$ 1.4×100

7 Kim is calculating 14.3×200

She writes this as her answer.

$14.3 \times 200 = 28.600$

Explain Kim's mistake.

8 Use the cards to complete the calculation.

You can use each card more than once.



0.002 $= 2,000$

How many ways is it possible to complete this calculation?

Talk about it with a partner.

Tuesday 11th January 2022

11-1-22

I can understand that anyone can suffer from mental health issues and that these can be resolved with support.

Use the next slides to remind yourself about mental health.

PSHE



What can we do when we are finding things difficult?



School - talk to a member of staff.

Home - talk to an adult you trust.

childline

ONLINE, ON THE PHONE, ANYTIME

Call 0800 1111 About us

Info and advice

Get support

Toolbox

Get involved

Your locker

Sign in

NEED TO TALK?



Get support

We're here for you on the phone or online. Or try getting support from other young people on our message boards.



Contacting Childline

Call us free on 0800 1111 or find out how to get in touch online. Whatever your worry, we're here for you.



Message boards

Share your experiences, have fun and get support from other young people in similar situations.



About Childline

Find out who we are, what we do - and how we can help you.

Struggling with your
mental health?



Check out youngminds.org.uk/find-help

YOUNGMiNDS

Worried about how you're
feeling?



Check out youngminds.org.uk/find-help

YOUNGMiNDS

Tuesday 11th January 2022

11-1-22

I can understand that anyone can suffer from mental health issues and that these can be resolved with support.

Your task...

Explain the steps that you can take to support your mental health.

Explain where children can get support if they have mental health issues.

Tuesday 11th January 2022

11-1-22

I can investigate the parts of a plant.

What can you remember about the parts of a plant?

Use the weblink below to remind yourself of the parts of a plant.

<https://www.bbc.co.uk/teach/class-clips-video/science-ks1-ks2-ivys-plant-workshop-parts-of-a-plant/zvdkpg8>

Vocabulary:
roots,
stem,
leaves,
flower,
petals,
stamen,
stigma,
oxygen,
carbon dioxide,
photosynthesis

What can you tell me about the parts of a flower?

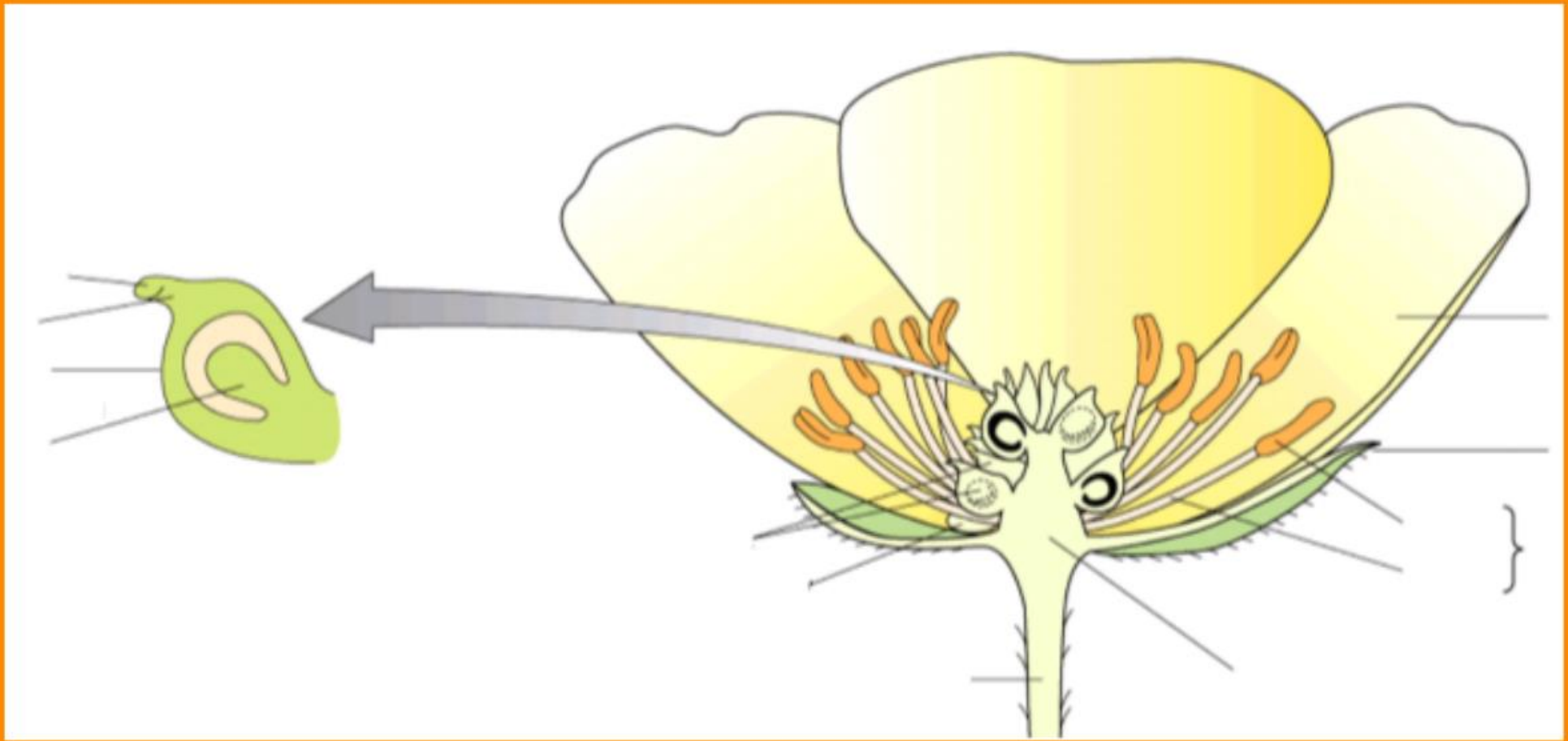
Use the weblinks below to remind yourself of the parts of a flower.

<https://www.bbc.co.uk/teach/class-clips-video/science-ks1-ks2-ivys-plant-workshop-the-anatomy-of-the-flower/zjmhkmn>

<https://www.bbc.co.uk/teach/class-clips-video/science-ks2--ks3-how-plants-and-animals-reproduce/zm8fbdm>

Vocabulary:

roots,
stem,
carpel
leaves,
flower,
petals,
stamen,
anther,
pollen,
pollination,
filament,
carpel,
stigma,
style,
ovaries,
ovules,
fertilisation.



Your task is to label the sections of a flower. Draw out your own diagram to do this or use the one above.